



FOREST BAILEY



GNU


MERWIN MADE
ZERO HAZARDOUS WASTE
23/24


HAND BUILT IN
WASHINGTON STATE



BLAKE PAUL



Gnu



Welcome to Gnu Country! We build our own damn boards in Washington State at the world's most environmentally friendly board building facility. We are powered by over 90% renewable energy, carefully manage our materials and process to minimize environmental impact and maximize the stoke. The Gnu human machine has been creating radical rideable art and zero hazardous waste for four Joyous Decades. Check out the 23/24 collection from Gnus; Forest, Jamie, Blake, Naima, Max, Barrett, Temple, Cannon and our in house free radicals.. Go Live.

WE BUILD OUR OWN DAMN BOARDS.

GNU



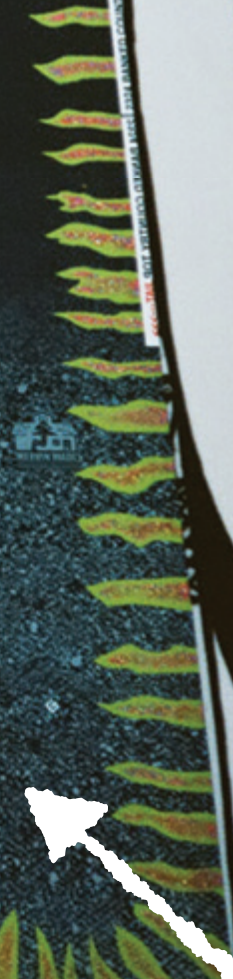
GNU

WELCOME TO 23/24



GNU Money

GNU



Green



WE BUILD OUR OWN DAMN BOARDS.

MIKE OLSON

WELCOME TO

**COOL
COUNTRY**



Gnu **TEAM**

**FOREST BAILEY
JAMIE ANDERSON
BLAKE PAUL
MAX WARBINGTON
TEMPLE CUMMINS
BARRETT CHRISTY
NAIMA ANTOLIN
GUS WARBINGTON
CANNON CUMMINS
PETER CERULO
ELLIE WEILER
MASATO TODA
ALEX LOPEZ
MICHAEL MCDANIEL
ISABELLA GOMEZ**



SURF'S SLOPS!

Grub

**TEAM
RADICALS**

BRENDAN SULLIVAN

MARKUS RUSTAD

JULIAN GLUCK

LAUREN NELSON

ARI MORRONE

DEREK CONTI



FSC CERTIFIED ECO WOODS



HAND BUILT IN WASHINGTON STATE

WE BUILD OUR OWN DAMN BOARDS 

ECO MATERIALS

- FSC CERTIFIED ECO WOODS
- LOW VOC RESIN SYSTEMS
- BIO TOP SHEETS

ECO PROCESS

- WATER BASED SUBLIMATION
- WATER BASED SOLVENTS
- WATER CLEANSSED FINISHING SYSTEMS
- NO TOXIC LACQUER COATINGS

ECO POWER

- WIND POWER
- WATER POWER

ECO RECYCLING

- WOOD SAWDUST TO SOIL
- RECYCLED WOOD
- RECYCLED PLASTICS

FREE HOT DOGS

Welcome to
MERVIN

MERVIN MADE VIDEO HERE!



FACTORY USA VIBES SINCE 1977!

Gnu

CONTOURS

BANANA IS TECHNOLOGY

BNA

THE ORIGINAL ROCKER/CAMBER HYBRID CONTOURS. UNREAL CONTROL.
PATENT #7823892 #8511704

HYBRID ORIGINAL BANANA THE BEST CONTOUR TO LEARN ON
PROGRESSION EASY / JIBBY / FLOATY

foot foot

MILD CAMBER ROCKER MILD CAMBER

Day 1 to Pro

HYBRID C2 Perfect All Terrain Contour
PERFECTION CONTROL / PRECISION / FLOAT

VARIATIONS:

foot foot

CAMBER ROCKER CAMBER

The perfect rocker / camber hybrid, rips everything

CAMBER³ Aggressive All Terrain Contour
AGGRESSION CONTROL / PRECISION / POWER

foot foot

CAMBER MILD ROCKER CAMBER

Camber engineered for snowboarding

HYBRID C2'
Easy Riding
All Terrain Contour

HYBRID C2'
Xtreme Riding
All Terrain Contour

ENGINEERED FOR SNOWBOARDING:

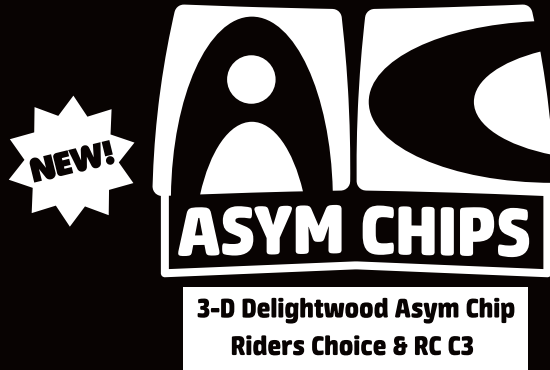
- Full contact and control in all conditions
"Awesome Everywhere"

ROCKER BETWEEN YOUR FEET / CAMBER OUTSIDE OF YOUR FEET.

- Central rocker builds in carve, edge hold and float
- Outboard camber builds in pop, stability and control

Performance hybrid bottom contours engineered for snowboarding. Snowboarding is done with two feet on one board in a sideways stance. Banana Technology combines mild rockers between your feet with varying amounts of camber to the contact points to maximize edge contact, control and hold in a sideways stance. The rocker brings to life the middle of your board that, with traditional ski camber is a low pressure "dead zone", while also adding float, improving carving and power. The cambers out to the tip and tail fine tune the pressure map, add pop, tip and tail stability, precision and control.

AWESOME TURNING
ASYM AWESOME
 BALANCE THROUGH ASYMMETRY



Gnu



- Precision control
- Steeper activation angle

- Power
- Lower activation angle

ASYM Level 1 Asym Sidecut
ASYM Sidecut: Deeper sidecut on heelside (power side).

ASYM Level 1 | **MENS** Recess
WOMENS Velvet

ASYM Level 2 Asym Sidecut & Contact
ASYM Sidecut: Deeper sidecut on heelside (power side).
ASYM Contact: Asymmetric contact angles longer toe side contact (finesse side) and shorter heelside contact (power side).

ASYM Level 2 | **MENS** Riders Choice / RC C3 / Finest
WOMENS Pro Choice / Ladies Choice

GLITE



FSC CERTIFIED ECO WOODS CONSTRUCTION

3 Performance levels of environmentally friendly, aerospace composite construction, hand laminated into Gnu's core constructions.

WE BUILD OUR OWN DAMN BOARDS.



LIGHT & EASY



GLITE 1

CORE: FSC Certified Poplar + Paulownia Core Light, Strong And Poppy
GLASS: Tri-Ax/Bi-Ax Glass | **TOP:** Eco Sublimated Poly Top | **BASE:** Eco Sublimated Co-Ex Base
SIDEWALL & TIPS/TAILS: UHMW

MENS: Recess / Young Money / Money / GWO / Antigravity

WOMENS: Gloss / B-Nice



LIGHT & SPEEDY



GLITE 2

CORE: FSC Certified Aspen + Paulownia Core Light, Strong And Poppy
GLASS: Tri-Ax/Bi-Ax Glass | **TOP:** Eco Sublimated Poly Top | **BASE:** Sintered Base

MENS: Essential Service / Finest / Head Space / 4x4 / Gremlin

WOMENS: Frosting



**LIGHTEST, SPEEDY,
& MOST POPPY**



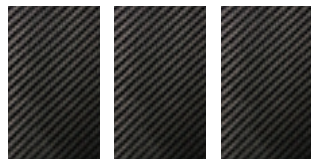
GLITE 3 CARBON

CORE: FSC Certified Aspen + Paulownia Core Lightest, Stronger And Most Poppy
GLASS: Tri-Ax/Bi-Ax Glass + Carbon Power Bands | **TOP:** Eco Sublimated Poly Top or Bio Beans (Jamie Anderson pro models)
BASE: Sintered Base | **SIDEWALL & TIPS/TAILS:** UHMW

III CARBON POWER BANDS Add pop, response and extend board performance life

MENS: Riders Choice / RC C3 / Hyper / Banked Country

WOMENS: Ladies Choice / Pro Choice / Barrett / Free Spirit




NAIMA ANTOLIN



MAGNE-TRACTION®

EDGE HOLD ADVANTAGE



MAGNE-TRACTION®

- DEEPEST SERRATIONS BETWEEN THE FEET
- MILD SERRATION
- ENTRY SERRATION

7 SERRATED STEAK KNIFE TECHNOLOGY

7 strategically located and sized edge serrations provide unreal edge hold and control in all conditions.



PRO MAG

“TEETH IN THE TAIL”

DIRECTIONAL SERRATED EDGE TECH

TEETH IN THE TAIL!

Combination of radial entry side-cut and strategically located edge serrations provide smooth entry and powerful “fin like” edge hold in the tail.

PROGRESSIVE
PRO MAGNE-TRACTION
TECHNOLOGY

CANNON CUMMINS

EXCLUSIVE FEATURED ON

Banked Country • Barrett •
Banked Country Split Board • Barrett Split Board •
By Temple & Cannon Cummins By Barrett Christy

FOREST BAILEY

BLAKE PAUL

Gnu **MENS**

PARK, FREESTYLE ALL MOUNTAIN, ALL MOUNTAIN



GNU Money



Authentic 90's
GNU ad

MONEY / YOUNG MONEY



FREESTYLE / PARK / TWIN SHAPE

- Freestyle fun and passionate progression
- Plays in the park rips the resort
- Amazing quality, performance and price

A perfect twin park preferring board that shreds the whole mountain. Featuring a snappy C2 rocker camber hybrid contour, sustainable fast growing wood core and eco sublimated graphics. All the shred bling without the crypto sting. The Money and the Young Money are our gifts to snowboarding's past, present and future.

TERRAIN TYPES



RIDER ABILITY



FLEX SCALE



**HYBRID
C2°**

Easy Riding All Terrain Contour



CORE: G LITE 1 FSC Certified Poplar + Paulownia Core: Light, Strong And Poppy

GLASS: Tri-Ax/Bi-Ax Glass: Strong And Poppy

TOP: Eco Sublimated Poly Top: Tough And Environmentally Nice.

BASE: Eco Sublimated Co-Ex Base: Fast, Tough And Holds Wax

SIDEWALL & TIPS/TAILS: UHMW: Tough And Fast

MONEY

LENGTH	CONTACT LENGTH	SIDE CUT	NOSE WIDTH	WAIST WIDTH	TAIL WIDTH	STANCE MIN-MAX/SET BACK
144	110cm	7.9	27.9	24.2	27.9	19"-24" / 0"
148	113cm	8	28.6	24.7	28.6	19"-24" / 0"
152	115cm	8.1	29.3	25.3	29.3	20.25"-25"/0"
156	117cm	8.2	29.6	25.5	29.6	20.25"-25"/0"
159	119cm	8.2	29.8	25.6	29.8	20.25"-25"/0"
150 w*	113cm	8	29.9	26	29.9	20.25"-25"/0"
154 w*	116cm	8.1	30.3	26.2	30.3	20.25"-25"/0"
158 w*	119cm	8.2	30.9	26.6	30.9	20.25"-25"/0"

YOUNG MONEY

LENGTH	CONTACT LENGTH	SIDE CUT	NOSE WIDTH	WAIST WIDTH	TAIL WIDTH	STANCE MIN-MAX/SET BACK
130	97cm	7.1	26.1	23	26.1	17.5"-20.75"/0"
135	100cm	7.4	26.8	23.2	26.8	17.5"-20.75"/0"
140	103cm	7.7	27	23.4	27	17.75"-22.5" / 0"

MAGNE-TRACTION®
EDGE HOLD ADVANTAGE



Art: Gnu Vintage Team
@gnusnowboards



WE BUILD OUR OWN DAMN BOARDS



WE'RE ALL BAD BUT IT'S ALL GOOD



HEADSPACE BY FOREST BAILEY

Gruu



Gnu

Gnu

FOREST BAILEY



HEAD SPACE

By FOREST BAILEY



FREESTYLE / PARK / TWIN SHAPE

- Forest's cambered pill creative freestyle vehicle
- Streetwise, rips the resort, toys with the park
- Technology unites your mind body and board

A classic pill freestyle shape from his beautiful mind. The C3 cambered Head Space is Forest's twin freestyle mind expansion tool. A proven street slayer, rips any freestyle situation you might encounter at your home resort or out there with the crew. Magne-Traction® edge control, FSC certified eco core, sintered eco sublimated base. Find your feet with a board that knows anything and everything is possible.

TERRAIN TYPES



RIDER ABILITY



FLEX SCALE



C³ CAMBER

Aggressive All Terrain Contour



CORE: G LITE 2 FSC Certified Aspen + Paulownia Core: Light, Strong And Poppy

GLASS: Tri-Ax/Bi-Ax Glass: Strong And Poppy

TOP: Eco Sublimated Poly Top: Tough And Environmentally Nice.

BASE: Eco Sublimated Sintered Base: Fast, Tough And Holds Wax

SEAWALL & TIPS/TAILS: UHMW: Tough And Fast

LENGTH	CONTACT LENGTH	SIDE CUT	NOSE WIDTH	WAIST WIDTH	TAIL WIDTH	STANCE MIN-MAX/SET BACK
149	112 cm	7.8	29.1	25	29.1	20.25"-25"/ 0"
152	113 cm	8	29.4	25	29.4	20.25"-25"/ 0"
155	115 cm	8.2	29.7	25.4	29.7	20.25"-25"/ 0"
158	117 cm	8.3	30	25.5	30	20.25"-25"/ 0"
155W*	115 cm	8.2	30.5	26.4	30.5	20.25"-25"/ 0"

*WIDE



Board art: Forest Bailey
@forestbailey



WE BUILD OUR OWN DAMN BOARDS

RECESS **NEW!** **2** **YEAR GRAPHIC**



FREESTYLE / ALL MOUNTAIN / ASYM TWIN SHAPE

- Fun, easy riding freestyler
- Built to rip everything at your local resort
- Progression enhancing, fatigue reducing asymmetry

Strap in and fire up your imagination and let intuitive easy riding asymmetric geometries, ultra grippy serrated edge control technology and lightweight environmentally friendly construction take your mountain exploration to new heights. Designed and hand built by shred parents to make radical progression fast, easy and fun.

TERRAIN TYPES



RIDER ABILITY



FLEX SCALE



HYBRID
ORIGINAL BANANA

THE BEST CONTOUR TO LEARN ON

TEXTURED TOP SHEET

ASYM LEVEL 1



CORE: G LITE 1 FSC Certified Poplar + Paulownia Core: Light, Strong And Poppy

GLASS: Tri-Ax/Bi-Ax Glass: Strong And Poppy

TOP: Eco Sublimated Poly Top: Tough And Environmentally Nice.

BASE: Eco Sublimated Co-Ex Base: Fast, Tough And Holds Wax

SIDEWALL & TIPS/TAILS: UHMW: Tough And Fast

LENGTH	CONTACT LENGTH	SIDE CUT	NOSE WIDTH	WAIST WIDTH	TAIL WIDTH	STANCE MIN-MAX/SET BACK
100	68 cm	5.7	21.2	19.2	21.2	12.5"-14.5"/ 0"
110	75 cm	6.5	23.3	21	23.3	14.5"-17.5"/ 0"
120	85 cm	6.7	24.5	21.5	24.5	16"-19.25"/ 0"
125	90 cm	6.8	25	22.5	25	17.5"-21"/ 0"

MAGNE-TRACTION
EDGE HOLD ADVANTAGE

AWESOME TURNING
ASYM AWESOME
BALANCE THROUGH ASYMMETRY



Board art: Jessa Gilbert
@jessagilbert



WE BUILD OUR OWN DAMN BOARDS

GWO

(GNU NEW WORLD ORDER)



FREESTYLE / ALL MOUNTAIN / TWIN SHAPE

- The perfect freestyle minded snowboard
- Rips everything you can see from the chair and loves a rope tow
- Amazing American craftsmanship, performance and value

Fun, easy to ride and packed with performance features the GWO (GNU NEW WORLD ORDER) is the culmination of decades of all terrain freestyle resort focused snowboard design. A ready for everything, catch free, carvy, floaty BTX Hybrid contour. Magne-Traction® serrated edges offer effortless edge hold on ice and hardpack. Lively, poppy, long lasting eco-friendly construction with a fast low maintenance base.

TERRAIN TYPES



RIDER ABILITY



FLEX SCALE



THE BEST CONTOUR TO LEARN ON



CORE: G LITE 1 FSC Certified Poplar + Paulownia Core: Light, Strong And Poppy

GLASS: Tri-Ax/Bi-Ax Glass: Strong And Poppy

TOP: Eco Sublimated Poly Top: Tough And Environmentally Nice.

BASE: Eco Sublimated Co-Ex Base: Fast, Tough And Holds Wax

SIDEWALL & TIPS/TAILS: UHMW: Tough And Fast

LENGTH	CONTACT LENGTH	SIDE CUT	NOSE WIDTH	WAIST WIDTH	TAIL WIDTH	STANCE MIN-MAX/SET BACK
147	109 cm	8	28.1	24.2	28.1	17"-22" / 0"
150	111 cm	8.1	28.2	24.5	28.2	19.24"-24" / 0"
153	114.5 cm	8.2	28.9	24.8	28.9	20.25"-25" / 0"
156	119 cm	8.2	29.8	25.4	29.8	20.25"-25" / 0"
159	121 cm	8.3	30.2	25.5	30.2	20.25"-25" / 0"
156 w*	119 cm	8.3	31.1	26.7	31.1	20.25"-25" / 0"
159 w*	121 cm	8.3	31.2	26.7	31.2	20.25"-25" / 0"
162 w*	122 cm	8.4	31.4	26.7	31.4	20.25"-25" / 0"

*WIDE



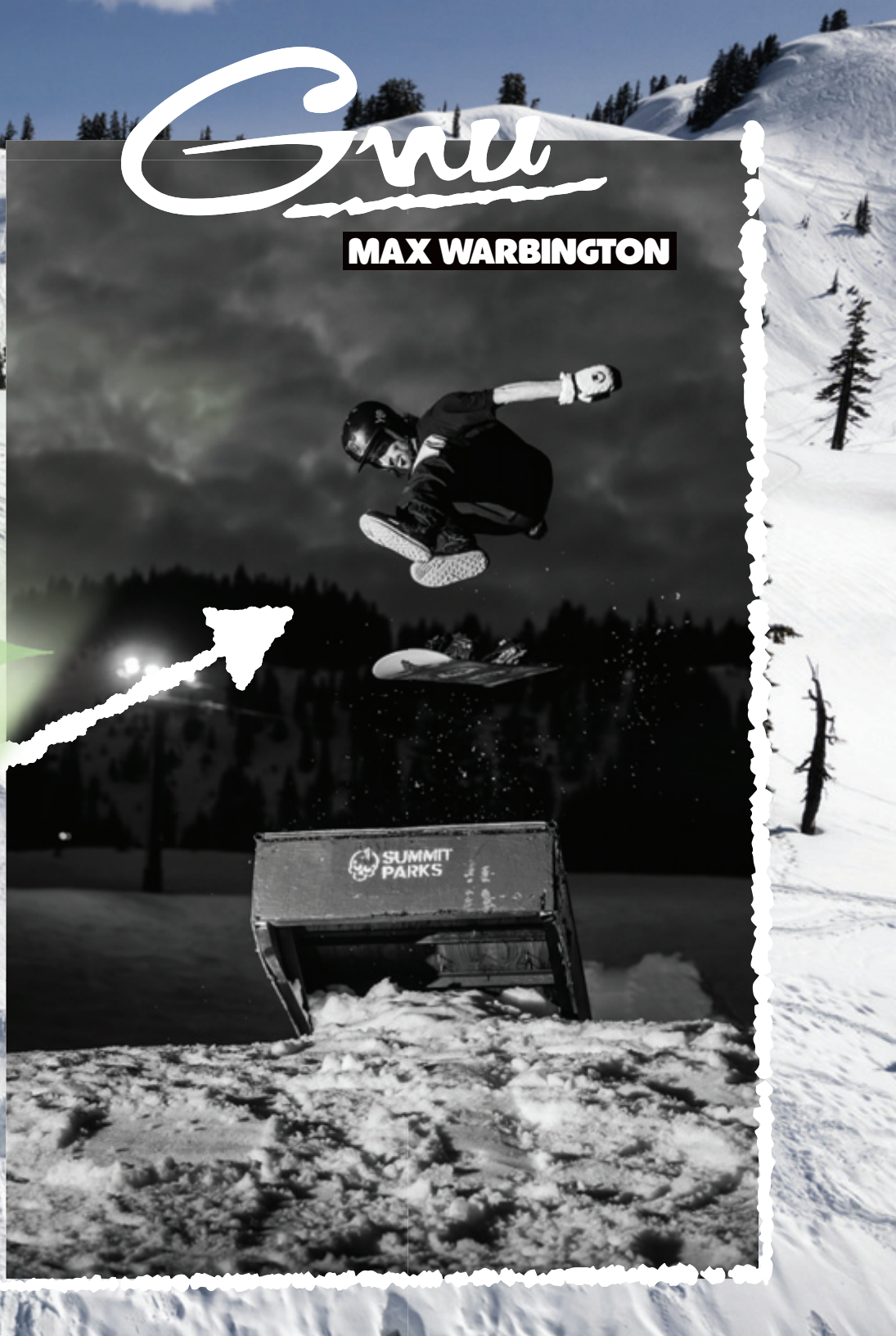
Board Photos: Jim Zimmerman
@fotomaxizoomdweebie



WE BUILD OUR OWN DAMN BOARDS

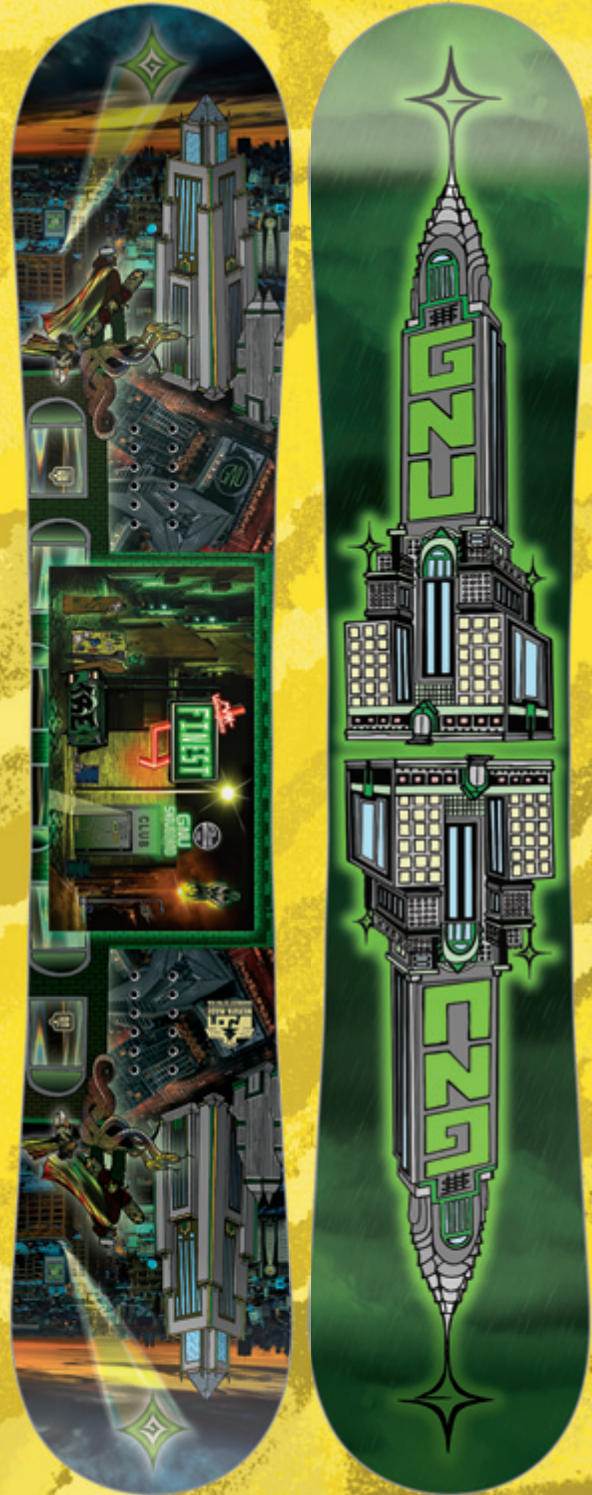
Grüu

MAX WARBINGTON



FINEST

By Max Warbington



FREESTYLE / ALL MOUNTAIN / ASYM TWIN SHAPE

- Max Warbington's fine tuned "can do" snowboard
- Freestyle's all terrain with the crew
- Max's art eco-sublimated on top and into a rugged sintered base

The Finest Gnu ever made! Max's ASYM C2x freestyle stick has been fine tuned in pursuit of freestyle progression and perfection. Guaranteed to add depth to your park performance and freestyle freedom to your deep snow game. Grab your crew, feed the animals and go boardin! Absolute control in all terrain is built in.

TERRAIN TYPES



RIDER ABILITY



FLEX SCALE



HYBRID
C2^x

Xtreme Riding All Terrain Contour

ASYM LEVEL 2



CORE: G LITE 2 FSC Certified Aspen + Paulownia Core: Light, Strong And Poppy

GLASS: Tri-Ax/Bi-Ax Glass: Strong And Poppy

TOP: Eco Sublimated Poly Top: Tough And Environmentally Nice.

BASE: Eco Sublimated Sintered Base: Fast, Tough And Holds Wax

SIDEWALL & TIPS/TAELS: UHMW: Tough And Fast

LENGTH	CONTACT LENGTH	SIDE CUT	NOSE WIDTH	WAIST WIDTH	TAIL WIDTH	STANCE MIN-MAX/SET BACK
148	110 cm	8 / 7.9	28.4	24.8	28.4	19.24"-24"/ 0"
151	111 cm	8.1 / 7.8	28.8	25	28.8	20.25"-25"/ 0"
154	113 cm	8.1 / 7.8	29.1	25.1	29.1	20.25"-25"/ 0"
157	116 cm	8.2 / 7.9	29.7	25.5	29.7	20.25"-25"/ 0"
159	118 cm	8.3 / 8.0	29.9	25.7	29.9	20.25"-25"/ 0"
155 w*	114 cm	8.1 / 7.8	30.4	26.2	30.4	20.25"-25"/ 0"

*WIDE

MAGNE-TRACTION[®]
EDGE HOLD ADVANTAGE

AWESOME TURNING
ASYM AWESOME
BALANCE THROUGH ASYMMETRY



Board art: Max Warbington
@69max420



WE BUILD OUR OWN DAMN BOARDS



MASATO TODA



GNU

RIDERS CHOICE

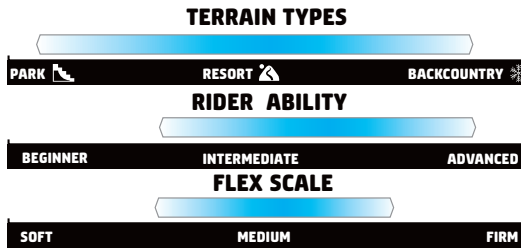
RIDERS CHOICE



FREESTYLE / ALL MOUNTAIN / ASYM TWIN SHAPE

- A board for riders by riders
- Poppy powerful 3-D Asym Chip power platforms
- Intuitive Asym advantage maximizes performance

New 3-D Delightwood Asym Chip construction on proven Asym geometries distribute energy to your edges and elevate pop, power and performance. The Gnu Squad had a heavy hand in this one combining; asymmetry, slightly wider widths that rail and float with C2 Hybrid contours that pop, slide, carve and lift. All laminated into an eco-minded construction with poppy carbon that is built to blast and last. It's quite possibly the best snowboard we have ever made!



CORE: G LITE 3 FSC Certified Aspen + Paulownia Core Lightest, Stronger And Most Poppy
GLASS: Tri-Ax/Bi-Ax Glass + Carbon Power Bands: Strong And Poppy
TOP: Eco Sublimated Poly Top: Tough And Environmentally Nice
BASE: Sintered Knife-Cut Base: Fast, Tough And Holds Wax
SIDEWALL & TIPS/TAILS: UHMW: Tough And Fast

LENGTH	CONTACT LENGTH	SIDE CUT	NOSE WIDTH	WAIST WIDTH	TAIL WIDTH	STANCE MIN-MAX/SET BACK
151.5	113 cm	7.9 / 8.2	29.2	25.1	29.2	20"-26"/ 0"
154.5	116 cm	7.7 / 8.1	29.3	25.2	29.3	20.25"-25"/ 0"
157.5	119 cm	7.8 / 8.2	29.9	25.5	29.9	20.25"-25"/ 0"
159.5	120 cm	7.9 / 8	30	25.6	30	20.25"-25"/ 0"
161.5	122 cm	8 / 8.4	30.2	25.8	30.2	20.25"-25"/ 0"
155 W*	116 cm	7.7 / 8.1	30.7	26.5	30.7	20.25"-25"/ 0"
158 W*	119 cm	7.8 / 8.2	31.2	26.8	31.2	20.25"-25"/ 0"
162 W*	122 cm	8 / 8.4	31.3	26.8	31.3	20.25"-25"/ 0"

*WIDE



Board art: Ben Lardy
 @benlardy



WE BUILD OUR OWN DAMN BOARDS

RC3



FREESTYLE / ALL MOUNTAIN / ASYM TWIN SHAPE

- Cambered freestyle for our riders by our riders
- Poppy powerful 3-D Asym Chip power platforms
- Intuitive Asym advantage maximizes performance

Contest contenders, progression technicians and camber lovers this one's for you!

New 3-D Delightwood Asym Chip construction on proven Asym geometries distribute energy to your edges and elevate pop, power and performance. Built on a poppy high performance C3 Camber chassis with a lively Aspen / Paulownia core. This beast of choice is performance enhanced with ultra responsive Carbon Power Bands and a rugged fast knife cut sintered base. Add the eco sublimated poly top and the RC3 is quite possibly the best freestyle snowboard we have ever made!

TERRAIN TYPES



RIDER ABILITY



FLEX SCALE



Aggressive All Terrain Contour

ASYM LEVEL 2



CORE: G LITE 3 FSC Certified Aspen + Paulownia Core Lightest, Stronger And Most Poppy

GLASS: Tri-Ax/Bi-Ax Glass + Carbon Power Bands: Strong And Poppy

TOP: Eco Sublimated Poly Top: Tough And Environmentally Nice

BASE: Sintered Knife-Cut Base: Fast, Tough And Holds Wax

SIDEWALL & TIPS/TAI LS: UHMW: Tough And Fast

LENGTH	CONTACT LENGTH	SIDE CUT	NOSE WIDTH	WAIST WIDTH	TAIL WIDTH	STANCE MIN-MAX/SET BACK
154.5	116 cm	7.7 / 8.1	29.3	25.2	29.3	20.25"-25"/ 0"
157.5	119 cm	7.8 / 8.2	29.9	25.5	29.9	20.25"-25"/ 0"
159.5	120 cm	7.9 / 8.0	30	25.6	30	20.25"-25"/ 0"
158 W*	119 cm	7.8 / 8.2	31.2	26.8	31.2	20.25"-25"/ 0"
162 W*	122 cm	8 / 8.4	31.3	26.8	31.3	20.25"-25"/ 0"

*WIDE

MAGNE-TRACTION®
EDGE HOLD ADVANTAGE

AWESOME TURNING
ASYM AWESOME
BALANCE THROUGH ASYMMETRY



Board art: Ben Lardy
@benlardy



WE BUILD OUR OWN DAMN BOARDS

ANTI GRAVITY



ALL MOUNTAIN / DIRECTIONAL SHAPE

- Directional camber freeride perfection
- Rips the resort top to bottom
- Radical quality, performance and price

Gnu has been rooted in weightless fun since forever. The directional C3 Antigravity honors our ethos by ignoring the past and being perfectly designed for modern snowboarding good times. An easy riding one board quiver with a feel good sustainable wood core, Magne-Traction® serrated edges, an eco-sublimated low maintenance base and proven all terrain geometries. Radical!

TERRAIN TYPES



RIDER ABILITY



FLEX SCALE



Aggressive All Terrain Contour



CORE: G LITE 1 FSC Certified Poplar + Paulownia Core: Light, Strong And Poppy

GLASS: Tri-Ax/Bi-Ax Glass: Strong And Poppy

TOP: Eco Sublimated Poly Top: Tough And Environmentally Nice.

BASE: Eco Sublimated Co-Ex Base: Fast, Tough And Holds Wax

SIDEWALL & TIPS/TAI LS: UHMW: Tough And Fast

LENGTH	CONTACT LENGTH	SIDE CUT	NOSE WIDTH	WAIST WIDTH	TAIL WIDTH	STANCE MIN-MAX/SET BACK
150	106cm	8	28.8	25	28.5	18.5"-23.25"/1"
153	108cm	8	29.2	25.2	29	19.25"-24"/1"
156	111cm	8	29.7	25.5	29.4	20.5"-25"/1"
159	113cm	8.1	30.1	25.7	29.7	20.5"-25"/1"
162	116cm	8.1	30.3	25.8	30	20.5"-25"/1"
159 w*	113cm	8.1	31.1	26.7	30.7	20.5"-25"/1"
162 w*	116cm	8.1	31.3	26.8	31	20.5"-25"/1"

*WIDE



Board art: Shawn Bishop
@sbishbish



WE BUILD OUR OWN DAMN BOARDS



theserviceboard

Follow

Message



912 posts 2,711 followers 1,141 following

the Service Board

Community

Seattle-area youth-led org building community through mentorship, outdoor adventure, social justice education and public service.

linktr.ee/theserviceboard

Followed by fawnmeadow, austensweetin, snowboyproductions + 23 more



Powder da...



TSBSoiree...



SLIP 21'



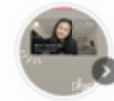
Partners



tSBig Show!



Drink Water



TSB takeov...

POSTS

REELS

TAGGED



On-call mountain support

- Be available on-mountain for an entire snowboarding day to assist staff in the event of an emergency
- Accompany participants in the case they receive care at ski patrol or the nearest hospital

Email info@theserviceboard.org for more info

VOLUNTEER INTEREST
HAPPY HOUR

- Learn about volunteering opportunities for 2023 Core Program
- Talk with current Snowboard Instructors and Mentors about their experience
- TSB will provide snacks. Guests must purchase their own drinks

NOV 18

WETIER BREWING TAPROOM
2016 E CHERRY ST.
SEATTLE, WA 98122
4:30-7:00PM

the Service Board is hiring a

SOCIAL MEDIA INTERN

Interns support content creation for our Core Program January-May

Deadline: December 5th, 2022



A COMMUNITY EVENT TO BENEFIT the Service board

coal



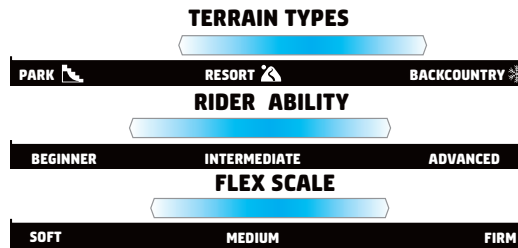
ESSENTIAL



ALL MOUNTAIN / DIRECTIONAL TWIN SHAPE

- Versatile, easy riding one board quiver
- Rips the entire resort and loves the pow
- A portion of proceeds goes to support @theserviceboard

Snowboarding is essential for winter time smile production...this easy riding resort ripper is equally at home carving up groomers under the chair, blasting pow stashes, side hits or hitting sculpted park fantasy features. A long lasting, poppy, eco friendly construction and built in our most versatile carvy, floaty, catch-free C2 Hybrid contour. Magne-Traction® guarantees effortless edgehold. A portion of the proceeds from every Essential sold goes to help our friends @theserviceboard on their mission to mentor teens to conquer personal and cultural challenges through public service and outdoor adventure like snowboarding.



HYBRID C2
Perfect All Terrain Contour



CORE: G LITE 2 FSC Certified Aspen + Paulownia Core: Light, Strong And Poppy

GLASS: Tri-Ax/Bi-Ax Glass: Strong And Poppy

TOP: Eco Sublimated Poly Top: Tough And Environmentally Nice.

BASE: Eco Sublimated Sintered Base: Fast, Tough And Holds Wax

SIDEWALL & TIPS/TAILS: UHMW: Tough And Fast

NEW-->

LENGTH	CONTACT LENGTH	SIDE CUT	NOSE WIDTH	WAIST WIDTH	TAIL WIDTH	STANCE MIN-MAX/SET BACK
153	112 cm	8.2	29.3	25.2	29.3	20.25"-25"/.5"
155	114 cm	8.2	29.5	25.3	29.5	20.25"-25"/.5"
157	115 cm	8.2	29.8	25.5	29.8	20.25"-25"/.5"
159	117 cm	8.2	30	25.7	30	20.25"-25"/.5"
158 MW*	117 cm	8.2	30.8	26.5	30.8	20.25"-25"/.5"
160 MW*	119 cm	8.2	31	26.7	31	20.25"-25"/.5"

*MID WIDE

MAGNE-TRACTION®
EDGE HOLD ADVANTAGE



Board art: Forest Bailey
@forestbailey



WE BUILD OUR OWN DAMN BOARDS



LAUREN NELSON



GREMLIN



ALL MOUNTAIN / DIRECTIONAL SHAPE

- Take over any mountain
- Loves pow, eats hardpack and ice
- Camber, Magne-Traction®, sintered, self centered
- Mild volume Shift. Ride this board 2 cm shorter than your normal board

The Gremlin. A one board quiver for advanced snowboarder's looking to get more attention from the chair and in the bar. Floaty nose sniffs out powder, camber body pops over skiers and ropelines. Sintered base scratches rocks and crushes people who didn't know you were racing them to the bottom. The only snowboard on the planet that tells the truth...lies are to hard to remember when fire burns. A great idea that should have never been...Grab a Gremlin!

TERRAIN TYPES



RIDER ABILITY



FLEX SCALE



CAMBER

Aggressive All Terrain Contour



CORE: G LITE 2 FSC Certified Aspen + Paulownia Core: Light, Strong And Poppy

GLASS: Tri-Ax/Bi-Ax Glass: Strong And Poppy

TOP: Eco Sublimated Poly Top: Tough And Environmentally Nice.

BASE: Sintered Knife-Cut Base: Fast, Tough And Holds Wax

SIDEWALL & TIPS/TAILS: UHMW: Tough And Fast

LENGTH	CONTACT LENGTH	SIDE CUT	NOSE WIDTH	WAIST WIDTH	TAIL WIDTH	STANCE MIN-MAX/SET BACK
148	104 cm	6.8	30.3	25.8	29.1	18.5"-23.25"/ 2"
152	106 cm	7	30.9	26.1	29.7	19.25"-24"/ 2"
155	108 cm	7.2	31.3	26.4	30.1	19.25"-24"/ 2"
158	110 cm	7.5	32.1	27	30.8	19.25"-24"/ 2"
NEW--> 161	112 cm	7.7	32.6	27.5	31.3	19.25"-24"/ 2"



Art: Gnu Art Store
@gnusnowboards



WE BUILD OUR OWN DAMN BOARDS

TOP SECRET!



GREMLIN

COMING SOON!



BLAKE PAUL

Gnu



HYPER

By Blake Paul



ALL MOUNTAIN / DIRECTIONAL SHAPE

- Blake Paul's freestyling freeride snowboard
- Carbon power bands: Radical response and pop
- FSC certified core flies, floats, pops and lasts

Blake Paul's simple elegance...the perfect freestylers all mountain board. An eco friendly wood core rides smooth and stable. Carbon Power Bands ensure long lasting precision and pop. The C2 Hybrid contour, floaty nose and tapered directional shape settle nicely into things when conditions get soft. Magne-Traction® and a refined side cut make this an effortless carver on hardpack and ice. Less is radical!

TERRAIN TYPES



RIDER ABILITY



FLEX SCALE



**HYBRID
C2^x**

Xtreme Riding All Terrain Contour



CORE: G LITE 3 FSC Certified Aspen + Paulownia Core Lightest, Stronger And Most Poppy

GLASS: Tri-Ax/Bi-Ax Glass + Carbon Power Bands: Strong And Poppy

TOP: Eco Sublimated Poly Top: Tough And Environmentally Nice

BASE: Sintered Knife-Cut Base: Fast, Tough And Holds Wax

SIDEWALL & TIPS/TAILS: UHMW: Tough And Fast

NEW-->

LENGTH	CONTACT LENGTH	SIDE CUT	NOSE WIDTH	WAIST WIDTH	TAIL WIDTH	STANCE MIN-MAX/SET BACK
151	111 cm	8	28.8	24.7	28.2	20.25"-25.7" 1.5"
154	113 cm	8.1	29.4	25	28.8	20.25"-25.7" 1.5"
157	115 cm	8.2	29.7	25.3	29.3	20.25"-25.7" 1.5"
160	117 cm	8.3	30.8	25.6	29.9	20.25"-25.7" 1.5"
159W*	117 cm	8.3	31.1	26.7	30.3	20.25"-25.7" 1.5"

WIDE

MAGNE-TRACTION®
EDGE HOLD ADVANTAGE



Board design vision: Blake Paul
@blakepaul



WE BUILD OUR OWN DAMN BOARDS



Gnu

4x4

LEAVE 'EM IN THE DUST
4x4 BY FOREST BAILEY

4x4 By Forest Bailey



ALL MOUNTAIN / DIRECTIONAL SHAPE

- Forest Bailey's directional ATV
- Freestyle the entire mountain
- A street master's big mountain stick

Forest Bailey is a complete rider...his skateboard roots put him in the streets, his mastery of east coast ice makes him an amazing carver and his love of all things wild put him in the big mountains. A decade of board design experience and experiments went into this magical floaty nosed, zero taper angle, freestyle focused directional ATV. Head Space the streets and 4x4 the wilds. Forest Bailey's two board quiver is built to stack clips for the complete all terrain master part.

TERRAIN TYPES



RIDER ABILITY



FLEX SCALE



C³AMBER

Aggressive All Terrain Contour



CORE: G LITE 2 FSC Certified Aspen + Paulownia Core: Light, Strong And Poppy

GLASS: Tri-Ax/Bi-Ax Glass: Strong And Poppy

TOP: Eco Sublimated Poly Top: Tough And Environmentally Nice.

BASE: Sintered Sublimated

SIDEWALL & TIPS/TAILS: UHMW: Tough And Fast

LENGTH	CONTACT LENGTH	SIDE CUT	NOSE WIDTH	WAIST WIDTH	TAIL WIDTH	STANCE MIN-MAX/SET BACK
157	119 cm	8.4	29.7	25.5	29.7	19.24"-24"/1"
160	121 cm	8.4	30	25.7	30	19.24"-24"/1"



Board art: Forest Bailey
@forestbailey



WE BUILD OUR OWN DAMN BOARDS



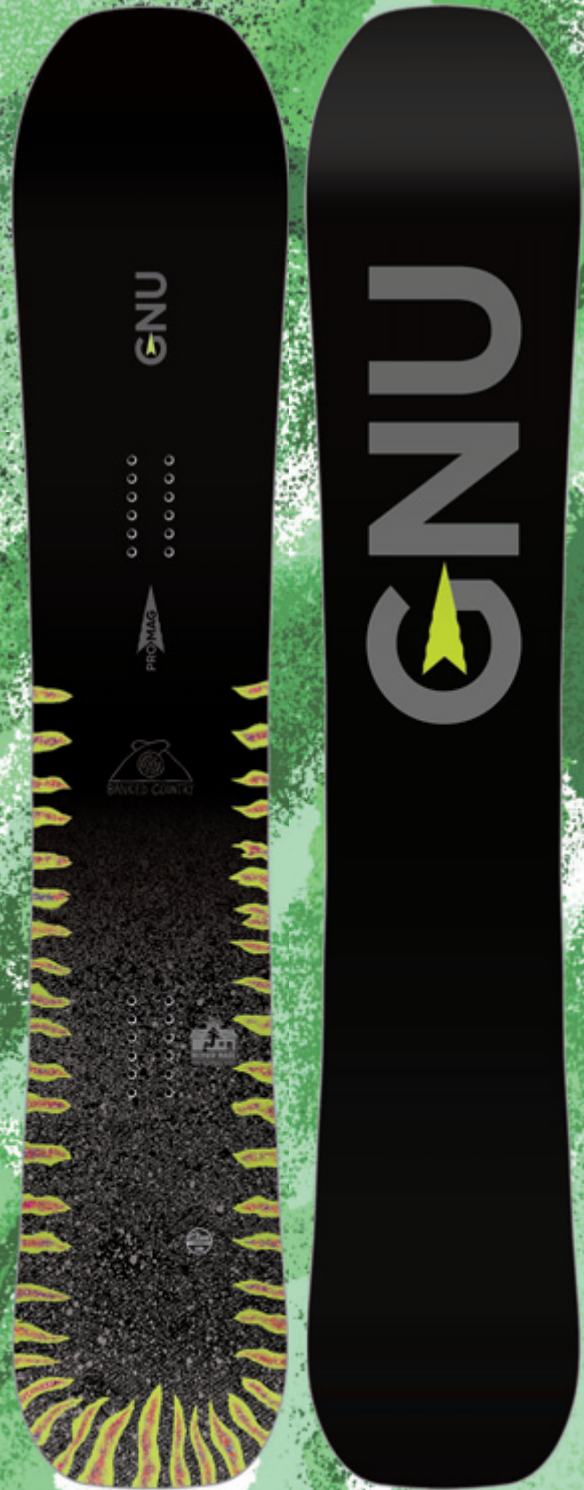
TEMPLE CUMMINS

CANNON CUMMINS



BANKED COUNTRY

By Temple & Cannon Cummins



ALL MOUNTAIN / DIRECTIONAL SHAPE

- Temple and Cannon's father/son ultra refined design
- Carbon Power Bands: Radical response and pop
- New, fast, positive Directional Progressive Magne-Traction® technology

The ultimate resort shred stick for advanced rippers who constantly watch the weather and score ridiculous amounts of pow but, rip everyday regardless of the conditions. Designed by legendary freestyle minded resort Billy Goater Temple Cummins and his skateboard influenced son Cannon this fantasy father son project is a refined high performance ATV with one eye on float, the other eye on fly and the third eye on more Baker Banked Slalom gold duct tape. A big floaty nose, a powerful responsive construction, directional camber set back 1.5", mild taper angle, a nice new switch friendly tail and exclusive all new directional progressive Magne-Traction®. Banked Country is what you want to ride and where you want to be.

TERRAIN TYPES



RIDER ABILITY



FLEX SCALE



C³ CAMBER

Aggressive All Terrain Contour



CORE: G LITE 3 FSC Certified Aspen + Paulownia Core Lightest, Stronger And Most Poppy

GLASS: Tri-Ax/Bi-Ax Glass + Carbon Power Bands: Strong And Poppy

TOP: Eco Sublimated Poly Top: Tough And Environmentally Nice

BASE: Sintered Knife-Cut Base: Fast, Tough And Holds Wax

SIDEWALL & TIPS/TAELS: UHMW: Tough And Fast

LENGTH	CONTACT LENGTH	SIDE CUT	NOSE WIDTH	WAIST WIDTH	TAIL WIDTH	STANCE MIN-MAX/SET BACK
155	112 cm	8.2	29.4	25.3	29.2	19"-24"/ 1.5"
159	114 cm	8.3	29.6	25.4	29.4	20"-25"/ 1.5"
162	116 cm	8.4	29.8	25.5	29.6	20"-25"/ 1.5"
160 W*	114 cm	8.3	30.8	26.5	30.6	20"-25"/ 1.5"
163 W*	116 cm	8.3	31.2	26.8	31	20"-25"/ 1.5"

*WIDE



Board art: Cannon Cummins
@cannoncummins



WE BUILD OUR OWN DAMN BOARDS



Gnu

BANKED COUNTRY

SPLIT

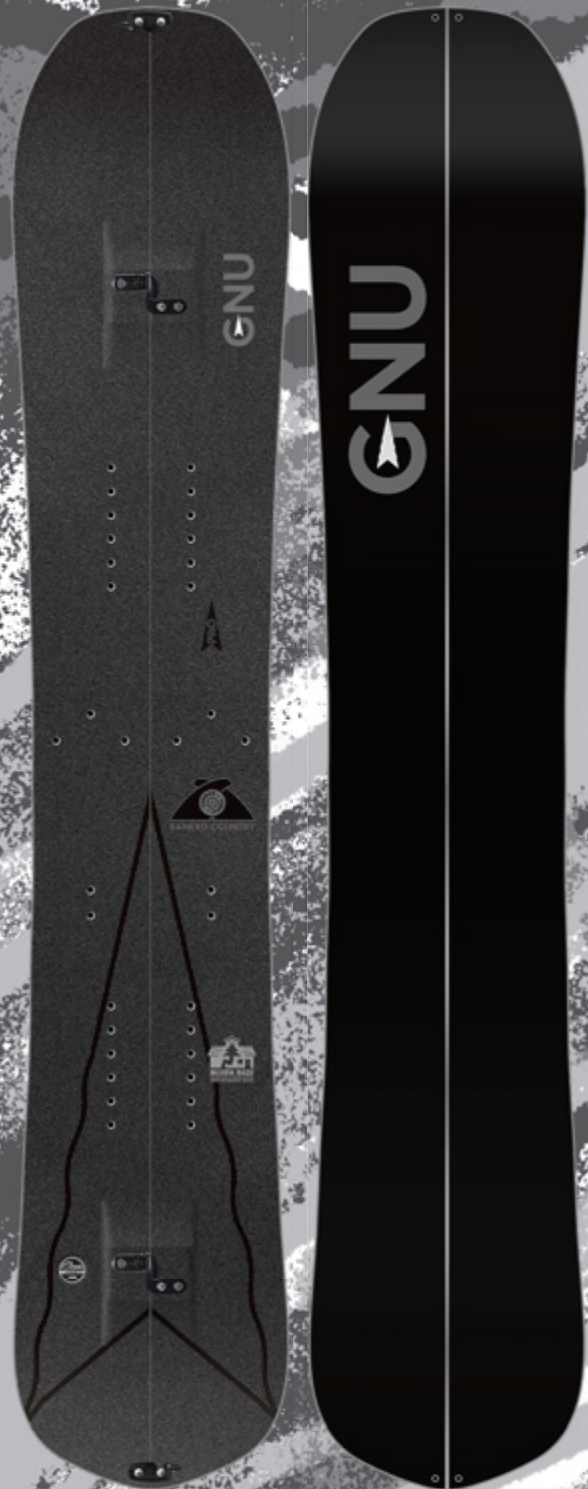
PRO MAG

TEMPLE CUMMINS

BANKED COUNTRY SPLIT

By Temple & Cannon Cummins

NEW!
2
YEAR
GRAPHIC



ALL MOUNTAIN FREERIDE / DIRECTIONAL SPLIT BOARD

- Temple and Cannon's lightweight directional pow slayer split
- Pillows, steeps and everything else out there
- Progressive Magne-Traction®, Karakoram Ultra Clips, and Carbon Power Bands for radical response and pop

Temple and Cannon's Banked Country split is a magical metamorphosis...their refined resort carving pow slaying machine has transformed into a lightweight climbing, powder and adrenalin access tool. A radically refined directional geometry/shape that includes a floaty nose, mild taper, Banked Slalom winning side cut and their unique Progressive "teeth in the tail" Magne-Traction® for quiet turn entry and unbelievable hook up in the tail to finish. A lightweight Paulownia core make this an effortless climber and floaty smooth rider. Karakoram Ultra Clips lock it all together for a solid board feel and speedy smooth transitions. Highly refined, heavily tested by the boys and you know this is the right stick when you are in Banked Country.

TERRAIN TYPES



RIDER ABILITY



FLEX SCALE



C³ CAMBER

Aggressive All Terrain Contour



CORE: FSC Certified 95% Paulownia with Aspen structure beams

GLASS: Tri-Ax/Bi-Ax with carbon power bands and insert reinforcement

TOP: Eco-Sublimated Poly Top: Tough And Environmentally Nice

BASE: Sintered Knife-Cut: Fast, Tough And Holds Wax

SIDEWALLS: UHMW: Tough And Fast

TIP/TAIL: Ultralight thin tip UHMW

LENGTH	CONTACT LENGTH	SIDE CUT	NOSE WIDTH	WAIST WIDTH	TAIL WIDTH	STANCE MIN-MAX/SET BACK
155	112 cm	8.2	29.4	25.3	29.2	19" - 24" / 1.5"
159	114 cm	8.3	29.6	25.4	29.4	20" - 25" / 1.5"
162	116 cm	8.4	29.8	25.5	29.6	20" - 25" / 1.5"



Art: Gnu Art Store
@gnusnowboards



WE BUILD OUR OWN DAMN BOARDS



Gnu **WOMENS**

PARK, FREESTYLE ALL MOUNTAIN, ALL MOUNTAIN

NAIMA ANTOLIN



Gnũ ✦
GLOSS

GLOSS



FREESTYLE / PARK / TWIN SHAPE

- True twin park focused style stick
- For easy progression and effortless flare
- Understated glam with underpriced tech

The Gloss is a twin freestyle board for playful park fun or all mountain freestyle action. It's got a blunted twin shape, a friendly flex, and a C2e camber hybrid contour, the perfect rocker/-camber hybrid. The Gloss puts a shine on your moves, with Magne-Traction® for catch-free edge control. understated glam, effortless style, underpriced tech, and unreal snowboarding!

TERRAIN TYPES



PARK RESORT BACKCOUNTRY

RIDER ABILITY



BEGINNER INTERMEDIATE ADVANCED

FLEX SCALE



SOFT MEDIUM FIRM

HYBRID
C2^e

Easy Riding All Terrain Contour



CORE: G LITE 1 FSC Certified Poplar + Paulownia Core: Light, Strong And Poppy

GLASS: Tri-Ax/Bi-Ax Glass: Strong And Poppy

TOP: Eco Sublimated Poly Top: Tough And Environmentally Nice.

BASE: Eco Sublimated Co-Ex Base: Fast, Tough And Holds Wax

SIDEWALL & TIPS/TAIls: UHMW: Tough And Fast

LENGTH	CONTACT LENGTH	SIDE CUT	NOSE WIDTH	WAIST WIDTH	TAIL WIDTH	STANCE MIN-MAX/SET BACK
136	103cm	7.8	26.1	22.6	26.1	17"-22" / 0"
140	105cm	7.9	27.2	23.3	27.2	17"-22" / 0"
144	107cm	8	27.6	23.5	27.6	18.5"-23.5" / 0"
148	110cm	8.1	27.9	23.9	27.9	18.5"-23.5" / 0"

MAGNE-TRACTION
EDGE HOLD ADVANTAGE



Art: Jennifer Ament
@jenniferament



WE BUILD OUR OWN DAMN BOARDS

B-NICE



FREESTYLE / ALL MOUNTAIN / TWIN SHAPE

- Nice and easy riding twin
- Freestyle progression on the whole mountain
- Magne-Traction® for enhanced edge control

The B-Nice is a twin all mountain board with an approachable shape, softer flex, and our Original Banana Hybrid contour for catch-free progression. Even if your friends aren't nice or the terrain is hammered, the B-Nice will smooth out any drama and make your day a little more playful. Magne-Traction® adds predictable edge-control to the long list of this board's niceties. A lot of tech for a nice price, the B-Nice lives up to its name.

TERRAIN TYPES



RIDER ABILITY



FLEX SCALE



THE BEST CONTOUR TO LEARN ON



CORE: G LITE 1 FSC Certified Poplar + Paulownia Core: Light, Strong And Poppy

GLASS: Tri-Ax/Bi-Ax Glass: Strong And Poppy

TOP: Eco Sublimated Poly Top: Tough And Environmentally Nice.

BASE: Eco Sublimated Co-Ex Base: Fast, Tough And Holds Wax

SIDEWALL & TIPS/TAILS: UHMW: Tough And Fast

NEW-->

LENGTH	CONTACT LENGTH	SIDE CUT	NOSE WIDTH	WAIST WIDTH	TAIL WIDTH	STANCE MIN-MAX/SET BACK
133	101 cm	7.5	25.8	22.5	25.8	17"-22" / 0"
139	103 cm	7.6	26.1	22.6	26.1	17"-22" / 0"
142	106 cm	7.7	27	23.2	27	17.75"-22.5"/0"
145	108 cm	7.8	27	23.4	27	17.75"-22.5"/0"
148	112 cm	7.9	28	24	28	18.5"-23.5"/0"
151	114 cm	8	28.3	24.3	28.3	18.5"-23.5"/0"
154	116 cm	8.1	28.7	24.6	28.7	18.5"-23.5"/0"



Art: Mike Biskup
@mikebiskup



WE BUILD OUR OWN DAMN BOARDS

Gru

NAIMA ANTOLIN



VELVET



ALL MOUNTAIN / FREESTYLE / ASYM TWIN SHAPE

- Asym twin for freestyle progression
- The entire mountain is your creative playground
- Environmentally comfy FSC Certified wood core and a sintered base

The Velvet is the choice of Gnu team riders who approach the whole mountain like their park. It's snappy flex and hybrid C2 contour work in synergy for pop and stability. It features intuitive asym geometry, and Magne-Traction®, so it is catch-free and responsive. The eco sublimated plant-based graphics give this ride a down to earth vibe. The Velvet is comfortable in any conditions and as balanced in the park as it is in banked slaloms or street sessions. Design conceptualized by Naima Antolin and designed by Hannah Eddy.

TERRAIN TYPES



RIDER ABILITY



FLEX SCALE



**HYBRID
C2**

Perfect All Terrain Contour

ASYM LEVEL 1



CORE: G LITE 2 FSC Certified Aspen + Paulownia Core: Light, Strong And Poppy

GLASS: Tri-Ax/Bi-Ax Glass: Strong And Poppy

TOP: Eco Sublimated Poly Top: Tough And Environmentally Nice.

BASE: Eco Sublimated Sintered Base: Fast, Tough And Holds Wax

SIDEWALL & TIPS/TAILS: UHMW: Tough And Fast

LENGTH	CONTACT LENGTH	SIDE CUT	NOSE WIDTH	WAIST WIDTH	TAIL WIDTH	STANCE MIN-MAX/SET BACK
139	103 cm	7.9 / 7.6	26.1	22.6	26.1	17"-22" / 0"
143	105 cm	8 / 7.7	27.2	23.5	27.2	18.5"-23.5" / 0"
147	107 cm	8.1 / 7.8	27.6	23.9	27.6	18.5"-23.5" / 0"
150	110 cm	8.2 / 7.9	27.9	23.9	27.9	19.24"-24" / 0"
153	113 cm	8.3 / 8	28.1	24.1	28.1	19.24"-24" / 0"

MAGNE-TRACTION®
EDGE HOLD ADVANTAGE

AWESOME TURNING
ASYM AWESOME
BALANCE THROUGH ASYMMETRY



Art: Hannah Eddy
@hannaheddyart



WE BUILD OUR OWN DAMN BOARDS



LADIES CHOICE

By Jamie Anderson



FREESTYLE / ALL MOUNTAIN / ASYM TWIN SHAPE

- Jamie Anderson's asym twin fun freestyle choice
- Carves, flies and floats the whole mountain
- Knife cut sintered base and carbon power bands

The Ladies Choice has secured its place in snowboarding history with over a decade of collaboration with the most decorated female snowboarder, Jamie Anderson. Her balance between progression and playfulness is reflected in the progressive asym technology and a C2x camber hybrid contour, perfectly tuned for freestyle flow. Bringing Jamie's eco-minded sensibility to our construction materials and process, the Ladies Choice is built with a sustainably harvested FSC certified wood core and water-based inks. Eco sublimated graphics by Sarah King continue the decade + partnership with this all-mountain freestyle work of art. Ride the Ladies Choice and channel some JA magic!

TERRAIN TYPES



RIDER ABILITY



FLEX SCALE



Xtreme Riding All Terrain Contour

ASYM LEVEL 2



CORE: G LITE 3 FSC Certified Aspen + Paulownia Core Lightest, Stronger And Most Poppy

GLASS: Tri-Ax/Bi-Ax Glass + Carbon Power Bands: Strong And Poppy

TOP: Eco Sublimated Bio Beans: Tough And Environmentally Nice

BASE: Sintered Knife-Cut Base: Fast, Tough And Holds Wax

SIDEWALL & TIPS/TAILS: UHMW: Tough And Fast

LENGTH	CONTACT LENGTH	SIDE CUT	NOSE WIDTH	WAIST WIDTH	TAIL WIDTH	STANCE MIN-MAX/SET BACK
139.5	103 cm	7.8 / 7.6	26.1	22.6	26.1	17"-22"/ 0"
142.5	107 cm	8.0 / 7.7	27	23.2	27	18.5"-23.5"/ 0"
145.5	109 cm	8.1 / 7.8	27.9	24	27.9	18.5"-23.5"/ 0"
148.5	111 cm	8.2 / 7.9	28	24.2	28	18.5"-23.5"/ 0"
151.5	114 cm	8.3 / 8.0	28.5	24.4	28.5	19.24"-24"/ 0"
153.5	116 cm	8.3 / 8.0	28.6	24.4	28.6	19.24"-24"/ 0"



AWESOME TURNING
ASYM AWESOME
BALANCE THROUGH ASYMMETRY



Board art: Sarah King
@sarahkingart



WE BUILD OUR OWN DAMN BOARDS

PRO CHOICE

By Jamie Anderson



ALL MOUNTAIN / FREESTYLE / ASYM TWIN SHAPE

- Jamie Anderson's asym twin choice for power freestyle moves
- Carves, flies and floats the whole mountain
- Knife cut sintered base and carbon power bands

Jamie Anderson continues to set the bar high for herself, and in the process, she has redefined what is possible for the world's best female snowboarders. She is a pro, in every sense of the word, and the Pro Choice is her choice for big days chasing big dreams. The C3 camber dominant contour, asymmetry and Magne-Traction® ensure pop and stability. Our most premium materials, construction and eco-sublimated art by Sarah King add up to a board that is as pro-earth as it is pro-performance.

TERRAIN TYPES



RIDER ABILITY



FLEX SCALE



C³ CAMBER

Aggressive All Terrain Contour

ASYM LEVEL 2



CORE: G LITE 3 FSC Certified Aspen + Paulownia Core Lightest, Stronger And Most Poppy

GLASS: Tri-Ax/Bi-Ax Glass + Carbon Power Bands: Strong And Poppy

TOP: Eco Sublimated Bio Beans: Tough And Environmentally Nice

BASE: Sintered Knife-Cut Base: Fast, Tough And Holds Wax

SIDEWALL & TIPS/TAI LS: UHMW: Tough And Fast

LENGTH	CONTACT LENGTH	SIDE CUT	NOSE WIDTH	WAIST WIDTH	TAIL WIDTH	STANCE MIN-MAX/SET BACK
145.5	109 cm	8.1 / 7.8	27.9	24	27.9	18.5"-23.5"/0"
148.5	111 cm	8.2 / 7.9	28	24.2	28	18.5"-23.5"/0"
151.5	114 cm	8.3 / 8.0	28.5	24.4	28.5	19.24"-24"/0"

MAGNE-TRACTION®
EDGE HOLD ADVANTAGE

AWESOME TURNING
ASYM AWESOME
BALANCE THROUGH ASYMMETRY



Board art: Sarah King
@sarahkingart



WE BUILD OUR OWN DAMN BOARDS

FROSTING



ALL MOUNTAIN / DIRECTIONAL

- Directional C2 camber hybrid, perfect all terrain contour
- Friendly flex for float and flow
- Sintered base and eco-friendly construction

The Frosting is a sweet directional C2 camber hybrid board, built for all mountain adventures. It packs enough power to boost confidence in any terrain, magne-traction® for stable edge-control, and a friendly flex that floats in the pow and maneuvers with ease. Eco sublimated art with water based inks and a sintered base are ingredients for a frosting that is far superior to the other sugary confections on the market.

TERRAIN TYPES



RIDER ABILITY



FLEX SCALE



**HYBRID
C2**

Perfect All Terrain Contour



CORE: G LITE 2 FSC Certified Aspen + Paulownia Core: Light, Strong And Poppy

GLASS: Tri-Ax/Bi-Ax Glass: Strong And Poppy

TOP: Eco Sublimated Poly Top: Tough And Environmentally Nice.

BASE: Eco Sublimated Sintered Base: Fast, Tough And Holds Wax

SIDEWALL & TIPS/TAIls: UHMW: Tough And Fast

LENGTH	CONTACT LENGTH	SIDE CUT	NOSE WIDTH	WAIST WIDTH	TAIL WIDTH	STANCE MIN-MAX/SET BACK
143	108 cm	7.7	27.7	24	27.5	17"-22" / 1"
146	110 cm	7.8	27.9	24.1	27.7	18"-23" / 1"
149	112 cm	7.9	28.1	24.3	27.9	18"-23" / 1"
152	114 cm	8	28.5	24.4	28.3	18.5"-23.5" / 1"



Art: Corinne Weidmann
@corinne.weidmann



WE BUILD OUR OWN DAMN BOARDS

Barrett Christy



Gru

PRO MAG

BARRETT

By Barrett Christy



ALL MOUNTAIN / DIRECTIONAL SHAPE

- Barrett's pro model evolution for the directional revolution
- All Terrain camber dominant power player
- Progressive Magne-Traction® and Carbon Power Bands: Radical response and pop

The award-winning Barrett is the pinnacle of all mountain design. 25+ years of women's board design heritage has culminated in the Barrett. Camber perfection for stability and control, Carbon strips for light-weight snap and edge-to-edge torsional precision. Progressive Magne-traction® because edge control is the foundation for everything awesome in snowboarding. The evolution of Barrett's model is premium performance perfection in a pretty package. A portion of proceeds from the sale of this board is donated to Boarding for Breast Cancer @b4bc to support youth focused education, health and wellness programs.

TERRAIN TYPES



RIDER ABILITY



FLEX SCALE



CAMBER³

Aggressive All Terrain Contour



Portion of sales benefits



CORE: G LITE 3 FSC Certified Aspen + Paulownia Core Lightest, Stronger And Most Poppy

GLASS: Tri-Ax/Bi-Ax Glass + Carbon Power Bands: Strong And Poppy

TOP: Eco Sublimated Poly Top: Tough And Environmentally Nice

BASE: Sintered Knife-Cut Base: Fast, Tough And Holds Wax

SIDEWALL & TIPS/TAILS: UHMW: Tough And Fast

LENGTH	CONTACT LENGTH	SIDE CUT	NOSE WIDTH	WAIST WIDTH	TAIL WIDTH	STANCE MIN-MAX/SET BACK
146	110 cm	8	27.8	24.1	27.5	17"-22"/1.5"
149	113 cm	8.1	28.1	24.3	27.8	18"-23"/1.5"
152	116 cm	8.1	28.6	24.5	28.2	18"-23"/1.5"
155	118 cm	8.1	29.1	24.8	28.8	18"-23"/1.5"



Original 1994 Board art!

Art: Barrett Christy
@barrettcc

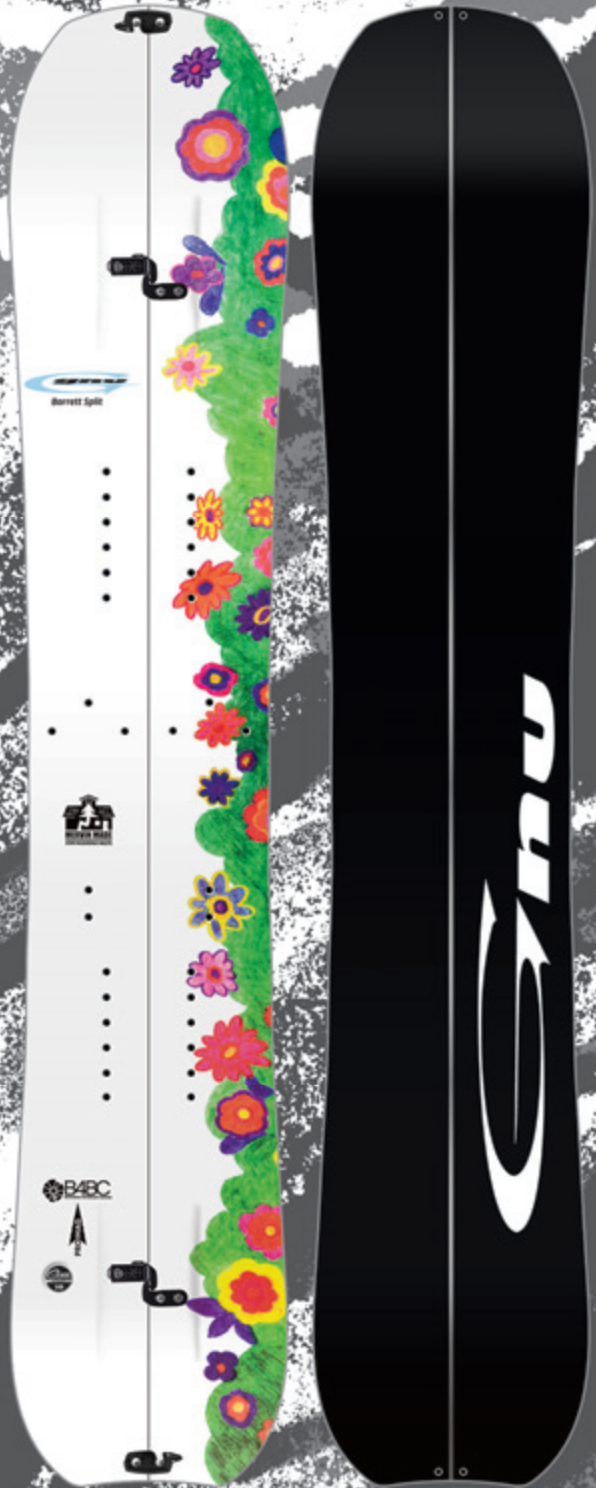


WE BUILD OUR OWN DAMN BOARDS

BARRETT SPLIT

By Barrett Christy

NEW!
2
YEAR
GRAPHIC



ALL MOUNTAIN FREERIDE / DIRECTIONAL SPLIT BOARD

- Barrett's lightweight directional pow slayer split
- Perfect for powder meadows or first descents
- Progressive Magne-Traction®, Karakoram Ultra Clips, and Carbon Power Bands for radical response and pop

Barrett took her refined all terrain directional pow slaying resort ripper and turned it into the ultimate back to nature retreat stick. A floaty nose keeps you on top of things, the cambered body and light weight Paulownia core ensures great skin traction for easy climbing and pop and power in all that powder. Keeping it in the family, Barrett is using Progressive Magne-Traction® technology like the Banked Country for guaranteed smooth, quiet entry turns and amazing hook-up in the tail.

TERRAIN TYPES



RIDER ABILITY



FLEX SCALE



CAMBER³

Aggressive All Terrain Contour



Portion of sales benefits



CORE: FSC Certified 95% Paulownia with Aspen structure beams

GLASS: Tri-Ax/Bi-Ax with carbon power bands and insert reinforcement

TOP: Eco-Sublimated Poly Top: Tough And Environmentally Nice

BASE: Sintered Knife-Cut: Fast, Tough And Holds Wax

SIDEWALLS: UHMW: Tough And Fast

TIP/TAIL: Ultralight thin tip UHMW

LENGTH	CONTACT LENGTH	SIDE CUT	NOSE WIDTH	WAIST WIDTH	TAIL WIDTH	STANCE MIN-MAX/SET BACK
149	113 cm	8.1	28.1	24.3	27.8	18"-23"/1.5"
152	116 cm	8.1	28.6	24.5	28.2	18"-23"/1.5"

NEW-->



Original 1994 Board art!

Art: Barrett Christy
@barrettcc



WE BUILD OUR OWN DAMN BOARDS

FREE SPIRIT

By Jamie Anderson



UNREAL ALL MOUNTAIN / DIRECTIONAL SHAPE

- Directional C3 floaty powerhouse
- Slightly volume shifted design with a freestyle spirit
- Carbon Power Bands: Radical response and pop

Jamie Anderson's Free Spirit continues to evolve. The Free Spirit model can chase big dreams on big mountains or whimsical wishes on mellow pow days. When she rides this board Jamie lives life to the fullest, with no limitations, no judges, and no boundaries. It's a floaty pow board with a freestyle spirit, capable of stomping big landings and navigating variable terrain with effortless ease. Whether shredding the resort, backcountry, Natural Selection courses, or AK lines the C3 camber dominant contour, Magne-Traction®, tail taper and snappy flex make this board a perfect choice for any spirit quest.

TERRAIN TYPES



RIDER ABILITY



FLEX SCALE



C³ CAMBER

Aggressive All Terrain Contour



CORE: G LITE 3 FSC Certified Aspen + Paulownia Core Lightest, Stronger And Most Poppy

GLASS: Tri-Ax/Bi-Ax Glass + Carbon Power Bands: Strong And Poppy

TOP: Eco Sublimated Bio Beans: Tough And Environmentally Nice

BASE: Sintered Knife-Cut Base: Fast, Tough And Holds Wax

SIDEWALL & TIPS/TAELS: UHMW: Tough And Fast

LENGTH	CONTACT LENGTH	SIDE CUT	NOSE WIDTH	WAIST WIDTH	TAIL WIDTH	STANCE MIN-MAX/SET BACK
148	97 cm	6	31	25.5	29.3	19.24"-24"/ 3"
153	102 cm	6	31.2	25.5	29.5	19.24"-24"/ 3"

MAGNE-TRACTION®
EDGE HOLD ADVANTAGE



Board Art: Sarah King
@sarahkingart



WE BUILD OUR OWN DAMN BOARDS

Gnu

SPEED/IN

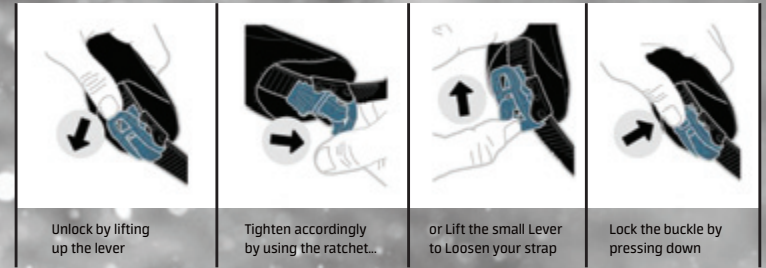
FASTER / EASIER / SMARTER / MULTI ENTRY

23/24





How to change pressure on your ankle quickly



UNIQUE TECHNOLOGY

- 1. **Reclining Highback** - Rear Entry Advantage
 - 2. **Auto Open Ankle Strap** - Opens Auto *MAGICALLY!*
 - 3. **Auto Lever** - Simplified Entry
 - 4. **Cable Redirection** - Unimpeded Movement
- Lifetime Baseplate Warranty**

Gnu's unique speed entry binding system is the ultimate in performance, speed, ease and comfort. Fits any snowboard boot. Set your bindings up once and one lever gets you in and out with amazing ease all season long. Enjoy more time riding and smiling and less time fiddling and sitting. Hit the pressure release button in the lift line for max comfort and circulation as you float up to the top for another epic run... Unreal Bindings!

HOW TO SPEED/IN

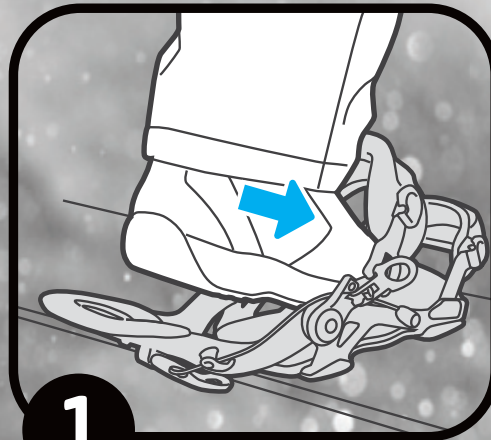
Gru

SPEED/IN

**SPEED ENTRY BINDING SYSTEM
FASTER, EASIER, SMARTER**



Lightweight,
performance and
strength in an
incredibly fast
binding system!



1

SPEED In



2

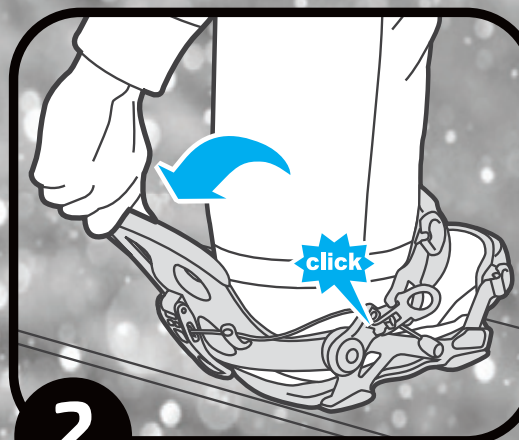


3



1

SPEED Out



2



3

UNIQUE/KEY TECHNOLOGY



Duplex Ankle Strap

- Ultra-light.
- Flip strap to change flex response.
- Two Straps in one

Strategically cored single injection construction is made with pliable TPU creating a comfortable and lightweight strap. Flip-able design enables a soft or stiff response for rider customization. Softer flexing side has extra large coring and smaller surface area. Stiffer flexing side has reduced coring and taller surface to lean into for more response.

CORE TECHNOLOGY BENEFIT	BENEFIT - Concise	BENEFIT - Description
Reclining Highback	Rear Entry Advantage	Makes enter and exit incredibly fast and easy, with one hand.
Auto Open System	Works like Magic. Opens Auto-"Magically"	Upper strap opens auto-"magically"when highback reclines for a quick, easy and extra large entry and exit zone.
Auto Lever	Simplified Entry	Only one click to apply the right amount of pressure. No more fumbling with ratchet buckles.
Pressure Relief Button	Warm, Happy Feet	Can be pressed manually to relax ankle strap pressure on front after run while boots remains secure in binding. Increased blood flow keeps feet comfortable and warm.
Ankle Strap - Micro Buckle	Quickly Adjust Tension	Rider can adjust strap tension while on the go. Tighten a couple clicks for a big hit or loosen for different terrain. Release strap for additional exit and entry space in steep terrain.
Ankle & Toe Strap - Micro Buckle	Multi-Entry Option	Micro Buckles on both straps enable you to open and close both straps in traditional way in case you need that option.
Cable Redirection	Unimpeded Movement	Ensures maximum freedom of movement of boot. Reduces strain when closing highback.
Toe Cup Wrap Strap	Precision Fit and Response	Secures boot in place for a perfect fit each time. Wrap design provides more support and response while eliminating wedge and cinch pressure.
Highback Rotation	Custom Support	Highbacks can be rotated laterally to find the custom support angles that work for your style of riding.

CHEETER

SPEED/IN
MENS

PULL A FAST ONE AND BEAT THE CROWD

- FT4 Baseplate - Predictable Performance
- ERGO-X Highback - Smoother entry and exit
- Thin Fit Toe strap - Ultra thin and light, wraps like second skin

On top of the innovative speed entry technology, asymmetric highbacks add support to your natural riding stance for control while the FT-4 Nylon Baseplate provides a smooth ride and vibration absorption for a full riding days comfort.

RESPONSE: RELAXED / ALL AROUND / AGGRESSIVE

RIDING STYLE: ALL MOUNTAIN

S (US M 4-7), **M** (US M 7-10), **L** (US M 10-12), **XL** (US M 12-14)

Disk: 4x4, Channel. Fiber Reinforced Polymer

Colorways: Black and White

4/10
FLEX



BLACK



WHITE



PSYCH-I

SPEED/IN
MENS

ULTRA-LIGHT FREESTYLE MOBILITY AND QUICKNESS TO BLOW YOUR MIND

- Hyper Cored Aluminum Baseplate - Light & Responsive
- ERGO-X Highback - Smoother entry and exit
- Complex Toe Cup Strap with Micro Buckle - Oversize with soft textiles and foam
- Canting

Not only do you get in and out of your bindings faster, the ultra-light aluminum chassis and highback enable you to maneuver quicker with less fatigue. The asymmetric highback design allows mobility to get out over you board and support to ride away clean. This combo is forgiving in freestyle terrain and flows on mountain.

RESPONSE: RELAXED / ALL AROUND / AGGRESSIVE

RIDING STYLE: ALL MOUNTAIN - FREESTYLE

S (US M 5-7), **M** (US M 7-9), **L** (US M 9-11), **XL** (US M 12-14)

Disk: 4x4. Fiber Reinforced Polymer

Colorways: Black and White

6/10
FLEX



WHITE



BLACK

FREEDOM

SPEED/IN
MENS

BREAKOUT ON THE POWER AND SPEED MACHINE

- Hyper Cored Baseplate with extra footbed dampening and a heel shock pod
- Alu Heelcup reinforced highback for response and precision at speed
- Canting

Extra supportive ankle straps and responsive highback with aluminum heelcup for riding in turbo mode. The aluminum chassis is ultra-light and sensitive for precision input in advanced terrain. Heel shock pads and a chassis enveloped by an EVA pad smooth out the shocks and vibration from hard landings and firm terrain.

RESPONSE: RELAXED / ALL AROUND / AGGRESSIVE

RIDING STYLE: ALL MOUNTAIN

S (US M 5-7M), **M** (US M 7-9), **L** (US M 9-11), **XL** (US M 12-14)

Disk: 4x4, Channel. Forged Aluminum

Colorway: Black

8/10
FLEX



BLACK

B♥REAL

SPEED/IN
WOMENS

DO MORE OF WHAT YOU CAME FOR

- FT4 Baseplate - Predictable Performance
- ERGO-X Highback - Smoother entry and exit
- Thin Fit Toe strap - Ultra Thin and light, wraps like second skin.

In addition to the practical speed-entry system you will become one with your binding supported by Asymmetric Highbacks that duplicate a natural riding stance and the predictable, smooth ride of the FT-4 Nylon Baseplate.

RESPONSE:  **RELAXED / ALL AROUND / AGGRESSIVE**

RIDING STYLE: ALL MOUNTAIN

S (US W 5-7), **M** (US W 7-9), **L** (US W 9-11)

Disk: 4x4, Channel. Fiber Reinforced Polymer

Colorway: White

4/10
FLEX



WHITE

FANTAST

SPEED/IN
WOMENS

LEAVE THE CROWD BEHIND AND RIDE

- Hyper Cored Aluminum Baseplate - Light & Responsive
- ERGO-X Highback - Smoother entry and exit
- Complex Toe Cup Strap with Micro Buckle - Oversize with soft textiles and foam

An aluminum chassis provides feedback to navigate with precision while the lightweight attributes increases response and reduces fatigue. Enveloped in a supportive ankle strap with a compression window for max comfort the full EVA wrapped footbed with large heel shock pad keeps your feet happy all day long.

RESPONSE: RELAXED / ALL AROUND / AGGRESSIVE

RIDING STYLE: ALL MOUNTAIN - FREESTYLE

S (US W 5-7), **M** (US W 7-9), **L** (US W 9-11)

Disk: 4x4. Fiber Reinforced Polymer

Colorway: Black

6/10
FLEX



BLACK



MENS



BLACK



WHITE



WHITE

CHEETER➤



BLACK

PSYCH



BLACK

FREEDOM⚡

Gnu

SPEED/IN

FASTER / EASIER / SMARTER / MULTI ENTRY

23/24

WOMENS



WHITE

B♥REAL



BLACK

FANTAST



FOREST BAILEY

Grnu

APPAREL



HEAD SPACE HAT
Navy Blue
EMBROIDERED LOGO
ONE SIZE FITS MOST

NEW!



SCRIPT CUFF BEANIE
BLACK - 100% ACRYLIC YARN
EMBROIDERED LOGO
ONE SIZE FITS MOST



FINEST TEE
Front center print
KELLY GREEN S/M/L/XL

NEW!



SCIENCE TEE
Front left chest print
ORANGE S/M/L/XL
100% RECYCLED CONTENT

NEW!

GNU

APPAREL

GWOOSH Winter Sock
100% ACRYLIC YARN
CYAN/PINK
S/M/L/XL

NEW!



NEW!

BARRETT LONG SLEEVE TEE
Front logo at left chest and back screen print
BLACK S/M/L/XL

GNU
GNU

GNU SCRIPT DIE-CUT STICKER
BLACK or WHITE
8" (203mm) WIDE



STATE ECO TEE
Front logo at left chest and back screen print
GRAY S/M/L/XL
100% RECYCLED CONTENT



SCRIPT ECO CREW
Front logo at left chest screen print
NAVY BLUE S/M/L/XL
100% RECYCLED CONTENT



GNU

EARLY 23/24 RELEASE

NORTH AMERICA



WE BUILD OUR OWN DAMN BOARDS.

ALL MOUNTAIN



GREMLIN
DIRECTIONAL SHAPE

CAMBER
GLITE 2

MAGNE-TRACTION.

- 148 ww* 25.8
- 152 ww* 26.1
- 155 ww* 26.4
- 158 ww* 27
- 161 ww* 27.5 **NEW!**
- waist width*
-
- Art: Gnu Art Dept.
- @ignusnowboards

NEW SHAPE!

ALL MOUNTAIN



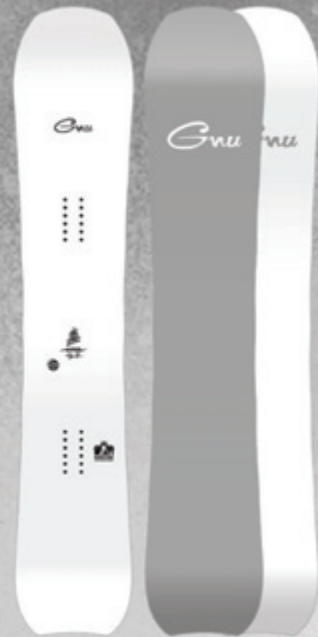
BANKED COUNTRY
By Temple & Cannon Cummins
DIRECTIONAL SHAPE

CAMBER
GLITE 3
CARBON

- 155 ww* 25.3
- 159 ww* 25.4
- 162 ww* 25.5
- WIDE**
- 160 ww* 26.5
- 163 ww* 26.8
- waist width*
-
- Art: Cannon Cummins
- @cannon_cummins



ALL MOUNTAIN



HYPER By Blake Paul
DIRECTIONAL SHAPE

HYBRID
C2'
GLITE 3
CARBON

MAGNE-TRACTION.

- 151 ww* 24.7 **NEW!**
- 154 ww* 25
- 157 ww* 25.3
- 160 ww* 25.6
- WIDES**
- 159 WW* 26.7
- waist width*
-
- Creative vision
- @blakepaul

FREESTYLE / ALL MOUNTAIN



FINEST - By Max Warbington
ASYM TWIN SHAPE

HYBRID
C2'
ASYM LEVEL 2
GLITE 2

MAGNE-TRACTION.

- 148 ww* 24.8
- 151 ww* 25
- 154 ww* 25.1
- 157 ww* 25.5
- 159 ww* 25.7
- WIDES**
- 155 ww* 26.2
- waist width*
-
- Art: Max Warbington
- @max420

GNU



WE BUILD OUR OWN DAMN BOARDS.

EARLY 23/24 RELEASE

EUROPE

GREMLIN DIRECTIONAL SHAPE



ALL MOUNTAIN

CAMBER

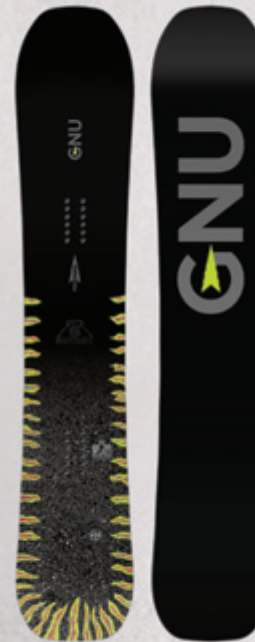
GLITE 2

MAGNE-TRACTION

- 148 ww* 25.8
- 152 ww* 26.1
- 155 ww* 26.4
- 158 ww* 27
- 161 ww* 27.5 **NEW!**
- waist width*

Art: Gnu Art Dept.
@gnusnowboards

BANKED COUNTRY By Temple & Cannon Cummins DIRECTIONAL SHAPE



ALL MOUNTAIN

CAMBER

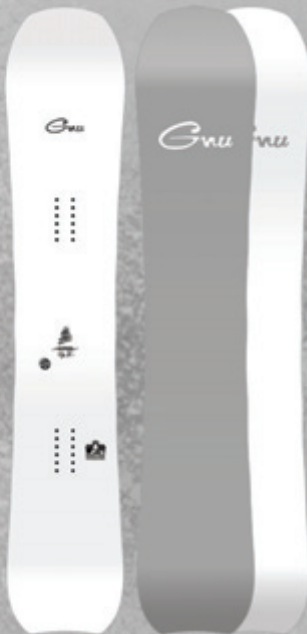
**GLITE 3
CARBON**

- 155 ww* 25.3
- 159 ww* 25.4
- 162 ww* 25.5
- WIDE**
- 160 ww* 26.5
- 163 ww* 26.8
- waist width*

Art: Cannon Cummins
@cannon_cummins



HYPER By Blake Paul DIRECTIONAL SHAPE



ALL MOUNTAIN

**HYBRID
C2**

**GLITE 3
CARBON**

MAGNE-TRACTION

- 151 ww* 24.7 **NEW!**
- 154 ww* 25
- 157 ww* 25.3
- 160 ww* 25.6
- WIDES**
- 159 ww* 26.7
- waist width*

Creative vision
@blakepaul

FINEST - By Max Warbington ASYM TWIN SHAPE



FREESTYLE / ALL MOUNTAIN



**HYBRID
C2**

ASYM LEVEL 2

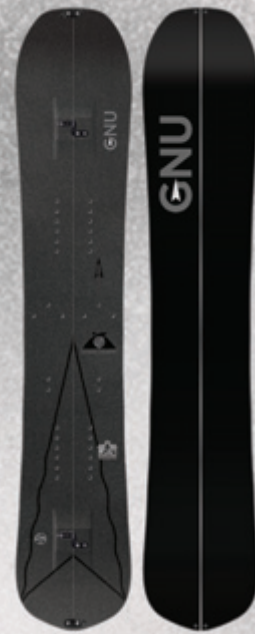
GLITE 2

MAGNE-TRACTION

- 148 ww* 24.8
- 151 ww* 25
- 154 ww* 25.1
- 157 ww* 25.5
- 159 ww* 25.7
- WIDES**
- 155 ww* 26.2
- waist width*

Art: Max Warbington
@69max420

BANKED COUNTRY SPLITS By Temple & Cannon Cummins DIRECTIONAL SHAPE



ALL MOUNTAIN SPLIT BOARD

CAMBER

- SPLIT CONSTRUCTION**
- 155 ww* 25.3
- 159 ww* 25.4
- 162 ww* 25.5
- waist width*

Art: Gnu Art Dept.
@gnusnowboards



YOUNG MONEY
TWIN SHAPE

HYBRID C2
GLITE1

MAGNE-TRACTION.
130 ww* 23
135 ww* 23.2
140 ww* 23.4
waist width*
.....
Art: Gus 10's Archive
@gnusnowboards



MONEY
TWIN SHAPE

HYBRID C2
GLITE1

MAGNE-TRACTION.
144 ww* 24.2
148 ww* 24.7
152 ww* 25.3
156 ww* 25.5
159 ww* 25.6
WIDES
150 ww* 26
154 ww* 26.2
158 ww* 26.6
waist width*
.....
Art: Gus 10's Archive
@gnusnowboards



HEAD SPACE By Forest Bailey
TWIN SHAPE

Camber
GLITE2

MAGNE-TRACTION.
149 ww* 25
152 ww* 25
155 ww* 25.4
158 ww* 25.5
WIDES
155 ww* 26.4
waist width*
.....
Art: Forest Bailey
@forestailey



23/24

Welcome to Gnu Country! We build our own damn boards in Washington State at the world's most environmentally friendly board building facility. We are powered by over 90% renewable energy, carefully manage our materials and process to minimize environmental impact and maximize the stoke. The Gnu human machine has been creating radical rideable art and zero hazardous waste for four Joyous Decades. Check out the 23/24 collection from Gus; Forest, Jamie, Blake, Naima, Max, Barrett, Temple, Cannon and our in house free radicals.. Go Live.

Gnu



WE BUILD OUR OWN DAMN BOARDS.

FREESTYLE / PARK

RECESS
ASYM TWIN SHAPE
TEXTURED TOP SHEET

2 YEAR WARRANTY
HYBRID C2
GLITE1

MAGNE-TRACTION.
100 ww* 19.2
110 ww* 21
120 ww* 21.5
125 ww* 22.5
waist width*
.....
Art: Jesse Slight
@jesslight



GWO
TWIN SHAPE

HYBRID C2
GLITE1

MAGNE-TRACTION.
147 ww* 24.2
150 ww* 24.5
153 ww* 24.8
156 ww* 25.4
159 ww* 25.5
WIDES
156 ww* 26.7
159 ww* 26.7
162 ww* 26.7
waist width*
.....
Art: Gus Art Dept
@gnusnowboards



FINEST - By Max Worthington
ASYM TWIN SHAPE

HYBRID C2
GLITE2

MAGNE-TRACTION.
148 ww* 24.8
151 ww* 25
154 ww* 25.1
157 ww* 25.5
159 ww* 25.7
WIDES
155 ww* 26.2
waist width*
.....
Art: Max Worthington
@maxw431



RIDERS CHOICE
ASYM TWIN SHAPE

HYBRID C2
GLITE3 CARBON

MAGNE-TRACTION.
151.5 ww* 25.1
154.5 ww* 25.2
157.5 ww* 25.5
159.5 ww* 25.6
161.5 ww* 25.8
WIDES
155 ww* 26.5
158 ww* 26.8
162 ww* 26.8
waist width*
.....
Art: Ben Lardy
@benlardy



RC C3
ASYM TWIN SHAPE

Camber
GLITE3 CARBON

MAGNE-TRACTION.
154.5 ww* 25.2
157.5 ww* 25.5
159.5 ww* 25.6
WIDES
158 ww* 26.8
162 ww* 26.8
waist width*
.....
Art: Ben Lardy
@benlardy



BANKED COUNTRY SPLITS
By Temple & Cannon Cummins
DIRECTIONAL SHAPE

Camber
GLITE3 CARBON

MAGNE-TRACTION.
155 ww* 25.3
159 ww* 25.4
162 ww* 25.5
waist width*
.....
Art: Gus Art Dept
@gnusnowboards



FREESTYLE / ALL MOUNTAIN

ANTIGRAVITY
DIRECTIONAL SHAPE
TEXTURED TOP SHEET

Camber
GLITE1

MAGNE-TRACTION.
150 ww* 25
153 ww* 25.2
156 ww* 25.5
159 ww* 25.7
162 ww* 25.8
WIDES
159 ww* 26.7
162 ww* 26.8
waist width*
.....
Art: Shaun Bishop
@shaunb



ESSENTIAL
DIRECTIONAL TWIN SHAPE

HYBRID C2
GLITE2

MAGNE-TRACTION.
153 ww* 25.2
155 ww* 25.3
157 ww* 25.5
159 ww* 25.7
WIDES
158 ww* 26.5
160 ww* 26.7
waist width*
.....
Art: Forest Bailey
@forestailey



GREMLIN
DIRECTIONAL SHAPE

Camber
GLITE2

MAGNE-TRACTION.
148 ww* 25.8
152 ww* 26.1
155 ww* 26.4
158 ww* 27
161 ww* 27.5
waist width*
.....
Art: Gus Art Dept
@gnusnowboards



HYPER By Blake Paul
DIRECTIONAL SHAPE

HYBRID C2
GLITE3 CARBON

MAGNE-TRACTION.
151 ww* 24.7
154 ww* 25
157 ww* 25.3
160 ww* 25.6
WIDES
159 ww* 26.7
waist width*
.....
Creative Vision
@makapad



4x4 By Forest Bailey
DIRECTIONAL SHAPE

Camber
GLITE2

MAGNE-TRACTION.
157 ww* 25.5
160 ww* 25.7
waist width*
.....
Art: Forest Bailey
@forestailey



ALL MOUNTAIN

BANKED COUNTRY
By Temple & Cannon Cummins
DIRECTIONAL SHAPE

Camber
GLITE3 CARBON

MAGNE-TRACTION.
155 ww* 25.3
159 ww* 25.4
162 ww* 25.5
WIDE
160 ww* 26.5
163 ww* 26.8
waist width*
.....
Art: Cannon Cummins
@cannon_cummins



FREESTYLE / PARK

GLOSS
TWIN SHAPE



HYBRID
GLITE 1

MAGIC TRACTION
136 ww* 22.6
140 ww* 23.3
144 ww* 23.5
148 ww* 23.9
waist width*
.....
Art: Jennifer Amant
@jenniferamant

GNU

23/24



WE BUILD OUR OWN DAMN BOARDS.

FREESTYLE / ALL MOUNTAIN

B-NICE
TWIN SHAPE



HYBRID
GLITE 1

MAGIC TRACTION
133 ww* 22.5 **NEW**
139 ww* 22.6
142 ww* 23.2
145 ww* 23.4
148 ww* 24
151 ww* 24.3
154 ww* 24.6
waist width*
.....
Art: Mike Bishop
@mikeshop

VELVET
ASYM TWIN SHAPE



HYBRID
GLITE 2

ASYM LEVEL 1
MAGIC TRACTION
139 ww* 22.6
143 ww* 23.5
147 ww* 23.9
150 ww* 23.9
153 ww* 24.1
waist width*
.....
Art: Hannah Eddy
@hannahedy

LADIES CHOICE By Jamie Anderson
ASYM TWIN SHAPE



HYBRID
GLITE 3
CARBON

ASYM LEVEL 2
MAGIC TRACTION
139.5 ww* 22.6
142.5 ww* 23.2
145.5 ww* 24
148.5 ww* 24.2
151.5 ww* 24.4
153.5 ww* 24.4
waist width*
.....
Art: Sarah King
@sarahkingart

PRO CHOICE By Jamie Anderson
ASYM TWIN SHAPE



CAMBER
GLITE 3
CARBON

ASYM LEVEL 3
MAGIC TRACTION
145.5 ww* 24
148.5 ww* 24.2
151.5 ww* 24.4
waist width*
.....
Art: Sarah King
@sarahkingart

ALL MOUNTAIN

NEW! FROSTING
DIRECTIONAL



HYBRID
GLITE 2

MAGIC TRACTION
143 ww* 24
146 ww* 24.1
149 ww* 24.3
152 ww* 24.8
waist width*
.....
Art: Corinne Weidmann
@corinneweidmann

BARRETT By Barrett Chisley
DIRECTIONAL SHAPE

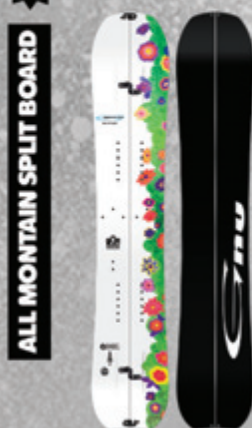


CAMBER
GLITE 3
CARBON

146 ww* 24.1
149 ww* 24.3
152 ww* 24.5
155 ww* 24.8
waist width*
.....
Art: Barrett Chisley
@barrettc



NEW! BARRETT SPLIT By Barrett Chisley
DIRECTIONAL SHAPE



CAMBER
SPLIT CONSTRUCTION

149 ww* 24.3
152 ww* 24.5 **NEW**
waist width*
.....
Art: Barrett Chisley
@barrettc



FREE SPIRIT By Jamie Anderson
DIRECTIONAL SHAPE



CAMBER
GLITE 3
CARBON

MAGIC TRACTION
148 ww* 25.5
153 ww* 25.5
waist width*
.....
Art: Sarah King
@sarahkingart

